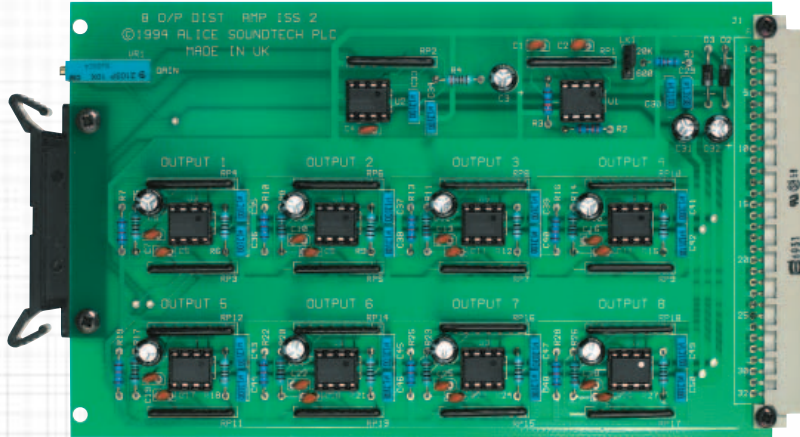


Dual Distribution Amplifier EDA 8-1



Dual Distribution Amplifier EDA 8-1

The Alice EDA 8-1 is a mono input 8 mono outputs distribution amplifier configured as a single Eurocard plug-in module utilising a 32 way DIN 41612 connector Row A only.

Technical Specification

Input impedance: internally selectable 20k ohms or 600 ohms balanced

Input: common-mode rejection: 60dB typical

Frequency response: 20Hz to 20kHz ± 0.2 dB

Noise: -100dB (RMS 30Hz to 15kHz) at unity gain.
Ref. + 8dBu output

Distortion: (THD) + 8dBu output: 40Hz 0.006%
1kHz 0.006% 10kHz 0.02%

Output impedance: <1 ohm balanced and floating

Minimum load: 600 ohms

Gain range: adjustable up to 20dB gain and 10dB loss

Max. input level: +27dBu

Max. output level: +25dBu into 5k ohms +24dBu into 600 ohms

Dimensions: 170mm x 100mm

Power requirements: ± 15 V to ± 18 V 10VA